



First Presbyterian Day School

WELCOME



Preschool is an important part of a child's life! They grow very quickly as they learn new concepts like problem-solving, reasoning, thinking, and creating. Thank you for considering First Presbyterian Day School to care for and teach your child in a Christian environment that nurtures their individual spirit. Our purpose is to help children with these skills in a safe, loving atmosphere that celebrates their mental, social, physical, and spiritual growth at all levels.

During the 2024-2025 school year, First Presbyterian Day School will offer morning classes for:

- Toddlers (1 year old) meet T/TH (2 days)
- 2 year old class meets M/W/F (3 days)
- 3 year old class meets M-F (5 days)
- 4 year old PreK meets M-F (5 days)

To be eligible for a specific class, your child must be that age on or before August 31.

EXTRA LEARNING

At First Presbyterian Day School, our students have many special learning opportunities outside of their normal classroom lessons.

Weekly Praise Time (3 & 4 year old classes)

Music class (at noon, extra fee)

Library Time in our Children's Library

Library Time at the Rowan Public Library

Storytelling with Special Friends

Spanish Lessons

Sign Language Lessons

Sensory Room and Indoor Climbing Room





Read below for extra information about our TODDLER classroom. Our students learn with engaging lessons, a loving teaching staff, and GREAT FUN!

TODDLERS



Our Toddlers:

- **Must be 1 by August 31**
- **Class meets from 8:30am-11:45am on Tuesdays and Thursdays (6 hrs/week)**
- **Class size is 8-10 students**
- **Skill development includes:**
 - **Gross Motor (walking, running, climbing)**
 - **Fine Motor (self-feeding, drawing, finger play)**
 - **Sensory (seeing, hearing, tasting, touching, and smelling)**
 - **Communication and Language Skills (using their body and words to communicate, using words and then phrases/sentences)**
 - **Social Skills (playing with others, taking turns, imaginative play, sharing, developing manners)**
 - **Literacy (listening to and engaging with books, pointing to objects in books, simple songs and nursery rhymes)**
 - **Social Growth Skills (improved separation anxiety, increased focus, better control of emotions and reactions)**

Tuition Costs: \$165.00/month (approx \$6.25/hr).





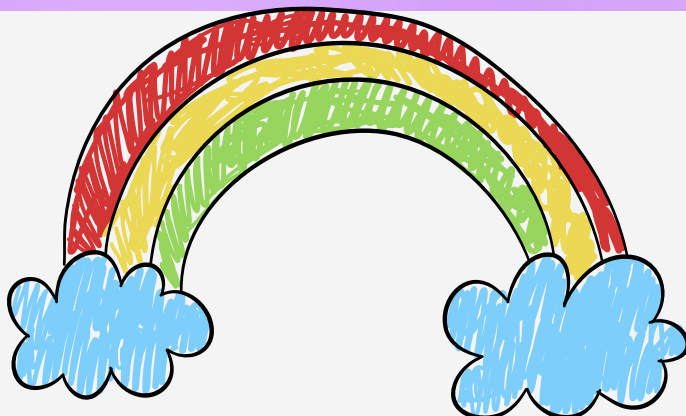
TWO YEAR OLDS



Our 2 year olds:

- Must be 2 by August 31
- Class meets from 8:30am-11:45am, Monday, Wednesday and Friday (9.75 hours/week)
- Class size 10-12 students
- Skill Development includes:
 - Gross Motor (running, jumping, kicking, climbing, eye-hand coordination, spatial awareness)
 - Fine Motor (coloring, drawing, making straight lines and circles, small manipulative, finger play, puzzles)
 - Sensory (seeing, hearing, tasting, touching, and smelling)
 - Communication and Language Skills (making 2-3 word phrases, short sentences and questions, general conversation, repeating nursery rhymes)
 - Social Skills (independence, sharing, taking turns, using manners, being kind, imaginative play with a friend, understanding when making mistakes)
 - Reading Literacy (reading books from front to back and right side up, listening to a story, answering simple questions about the book, reciting the ABCs, recognizing their names)
 - Math Literacy (recognizing and counting 1-10, recognizing/naming basic shapes, recognizing/naming basic colors)

Tuition costs: \$225.00/month (approx \$5.51/hr).





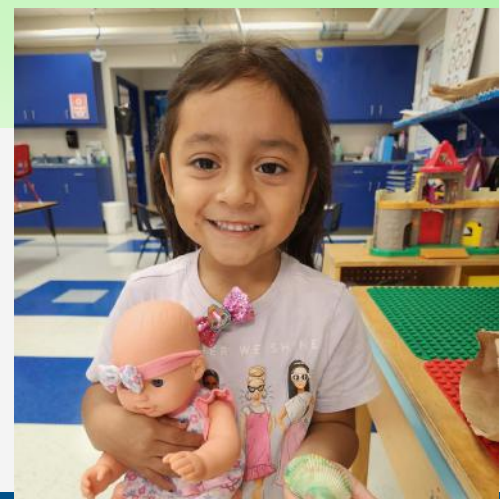
THREE YEAR OLDS



Our 3 year olds:

- Must be 3 by August 31
- Class meets from 8:30am -12noon, Monday thru Friday (17.5 hours/week)
- Class size 12-16 students
- Skill Development includes:
 - Gross Motor (running, jumping, climbing, dancing, spatial awareness, eye-hand coordination)
 - Fine Motor (coloring, drawing basic shapes, finger play, puzzles, writing first name)
 - Sensory (seeing, hearing, tasting, touching, and smelling)
 - Communication and Language Skills (general conversation, using sentences to make requests, repeating nursery rhymes, singing songs)
 - Social Skills (independence, sharing, taking turns, using manners, being kind, imaginative play with a friend, understanding when making mistakes, building friendships/relationships with peers, being a helper, respecting others)
 - Reading Literacy (listening to a book and answering simple questions, recognizing the ABCs, matching upper/lower case letters, writing their name, recognizing friends' names, rhyming words, opposites, names the days of the week/months/seasons)
 - Math Literacy (recognizing/counting 1-25, matching shapes, matching/sorting/comparing/patterns)

Tuition Costs: \$300.00/month (approx \$4.29/hr).





FOUR YEAR OLDS

Our 4 year olds:

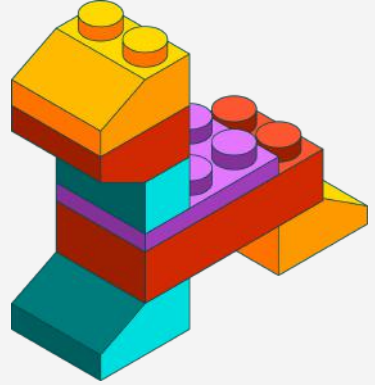
- Must be 4 by August 31
- Class meets from 8:30am -12noon, Monday thru Friday (17.5 hours/week)
- Class size is 12-16 students.
- Skill Development includes:
 - Gross Motor (running, jumping, climbing, dancing, hopping, spatial awareness, eye-hand coordination)
 - Fine Motor (coloring, drawing basic shapes, finger play, puzzles, writing ABC, writing first and last name)
 - Sensory (seeing, hearing, tasting, touching, and smelling)
 - Communication and Language Skills (general conversation, using sentences to make requests and give details, repeating nursery rhymes, singing songs)
 - Social Skills (independence, sharing, using manners, being kind, imaginative play with a friend, understanding when making mistakes, building relationships with peers, being a helper, respecting others, empathy/compassion)
 - Reading Literacy (listening to a book and retelling the story, "reading" books independently, matching upper/lower case letters, rhyming words, opposites, basic sight words, color words, shape words, recognizing names the days of the week/months/seasons)
 - Math Literacy (recognizing/counting 1-50, sequencing, drawing shapes, sorting/comparing/patterns)

Tuition Costs: \$300.00/month (approx \$4.29/hr).





ADDITIONAL INFORMATION



A non-refundable registration fee is due at the time of registration to ensure your child's place in a class. The registration fee is:

- \$100.00 for one child
- \$75.00 for each additional child

Tuition is paid monthly by automatic draft ONLY.

We invite all families interested in our program to schedule a personal visit (feel free to bring your little one too). You will find out why so many families love First Presbyterian Day School! For more information or to schedule a visit, contact the church at 704-636-5377 or email Christy Godbold at dayschool@firstpressalisbury.org

Thank you for considering First Pres Day School to serve you and your child with Christian love and in a fun, exciting, and stimulating environment. Please use the QR code to register online for 2025-2026.

